



## SHELBY COUNTY Visits Co-op

[www.shelbcountyceo.com](http://www.shelbcountyceo.com)

**S**helby Electric Cooperative (SEC) President and CEO Josh Shallenberger recently hosted the Shelby County CEO class at the cooperative's headquarters. Students learned about the history of the cooperative, where future electric generation will come from, and were given a tour of the cooperative's equipment yard.

"CEO stands for Creating Entrepreneurial Opportunities.

It is an experiential learning-based course that uses community relationships to provide an overview of business processes and development for juniors and seniors in Shelby County high schools," explained Shelby County CEO facilitator Marla Foor. "Throughout the program, students visit local businesses, learn from guest speakers, participate in operating a class business, write a business plan,

and, from concept to reality, build their own, functioning business," noted Foor.

*Pictured above, left to right: Shallenberger, Peyton Daniels, Central A & M; Dawson Ard, Windsor; Akizia Aguilar, Shelbyville; Graci Ogle, Stewardson-Strasburg; Audrey Summers, Shelbyville; Serenity Roberts, Shelbyville; Emma Cook, MAPS in Herrick; and Foor.*



# Apply now for the IEC Memorial Scholarships

**J**osh Shallenberger, Shelby Electric Cooperative (SEC) President/CEO, would like to remind co-op members that the Illinois electric cooperatives will once again be awarding academic scholarships to high school seniors through the Thomas H. Moore Illinois Electric Cooperatives (IEC) Memorial Scholarship Program. In 2022, 14 scholarships of \$2,000 each will be awarded.

**Eight scholarships** will be awarded to high school seniors who are the sons or daughters of an Illinois electric cooperative member receiving service from their cooperative.

**Four scholarships** are reserved for students enrolling full-time at a two-year Illinois community college and are the sons or daughters of Illinois electric cooperative members, employees, or directors.

**The Earl W. Struck Memorial Scholarship** will be awarded to a student who is the son or daughter of an Illinois electric cooperative employee.

**The LaVern and Nola McEntire Memorial Lineworker's Scholarship** will help pay for costs to attend the lineworker's school conducted by the Association of Illinois Electric



Maggie Holthaus of Stonington was presented her IEC Memorial Scholarship at Shelby Electric Cooperative's annual meeting back in June. Pictured with Maggie are her parents Robert and Jill Holthaus.

Cooperatives in conjunction with Lincoln Land Community College in Springfield, Illinois. Sons and daughters of co-op members, relatives of co-op employees or directors, individuals enrolled in the Lincoln Land Lineworker's School, and individuals who have served or are serving in the armed forces or National Guard are all eligible for the lineworker's scholarship.

Over the years, SEC has been fortunate to have several IEC Memorial Scholarship winners and

in June 2021, Maggie Holthaus was awarded one of these scholarships.

Information has been sent to area high school guidance counselors and is available on the cooperative's website, [shelbyelectric.coop](http://shelbyelectric.coop), under the "Community" menu tab. The deadline to apply online is December 31, 2021. The lineworker scholarship deadline is April 30, 2022.

For more information regarding scholarships, contact Heidi Hall at 217-774-3986 or email [scholarship@shelbyelectric.coop](mailto:scholarship@shelbyelectric.coop).



**P.O. BOX 560**  
**Shelbyville, IL 62565**  
**Phone: 217-774-3986**  
**or 1-800-677-2612**  
**Pay-by-Phone:**  
**1-855-385-9981**  
[www.shelbyelectric.coop](http://www.shelbyelectric.coop)  
[twitter.com/YourCoop](https://twitter.com/YourCoop)  
[facebook.com/YourCoop](https://facebook.com/YourCoop)

**Office Hours:**  
**7:00 a.m. - 4:00 p.m.**



## Time to fall back

Daylight saving time ends at 2 a.m. on Sunday, November 7. Remember to set your clocks back one hour before you go to bed on Saturday evening.



Local fire officials recommend changing the batteries in your smoke detector(s) at this time.

# Linemen compete in Safety Rodeo



Linemen from Shelby Electric Cooperative (SEC) recently participated in the annual AIEC Lineman's Safety Rodeo sponsored by the Association of Illinois Electric Cooperatives. Seventeen teams from 13 electric co-ops, one municipal electric utility, and one team of Lincoln Land Community College linework students participated in the friendly competition. The rodeo highlights the skills linemen use to work safely and efficiently.

Nick Dunaway, Brian Chevalier, and Nick Ray represented (SEC) as a team, while Dalton Brown and Luke Brown competed individually at the rodeo. The event was held at the Lincoln Land Community College Lineman Training Grounds in Springfield. They competed against teams from across Illinois and were judged in events using skills that focus on safe work practices, agility, speed, and accuracy.

Line personnel competed in five team and individual events: a 40-foot climb, hurt man rescue, H-structure obstacle course, transformer banking, and a head-to-head climbing challenge. Apprentice lineman Dalton Brown finished in second place out of 32 competitors in the individual transformer trainer event. Construction Superintendent Brian Chevalier competed as an SEC team member, while also finishing 3rd overall in the individual event scoring.

Scores for each event are based on completion time, proper execution of the task, and safety. Deductions were made to a team or individual's overall performance score due to mistakes such as slipping when climbing poles, dropping tools, or executing inappropriate procedures or methods.

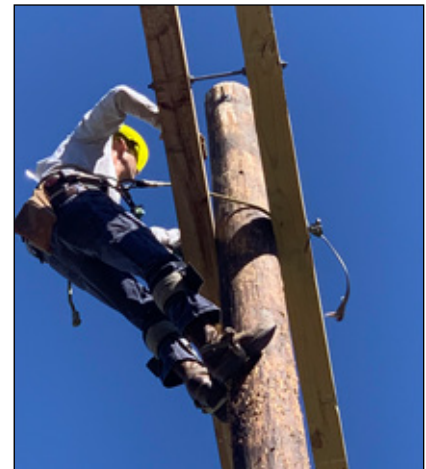
Congratulations to our linemen on their team and individual efforts and to all who participated in the rodeo!



Representing Shelby Electric Cooperative at this year's Lineman's Safety Rodeo, pictured left to right: Dalton Brown, Nick Dunaway, Brian Chevalier, Nick Ray, and Luke Brown.



Apprentice Lineman Dalton Brown placed second in the individual transformer trainer event.



Construction Superintendent Brian Chevalier finished third overall in individual event scoring.



*From the members, employees, and directors of Shelby Electric Cooperative, Shelby Energy Company, and PWR-net High Speed Internet ...*

**THANK YOU VETERANS**  
FOR YOUR SERVICE TO OUR COUNTRY!

Remember to say

**THANK YOU** to a Veteran

on November 11!

**REAL LIFE  REAL POWER**

# Getting Real with Marla and winter extras

**F**rosty promised he would come back one day, and that time is growing near. People often forget that their winter utility bills may begin to increase in direct proportion to the falling temperatures. The blame for the increase in energy use should not be entirely placed on the furnace. This foray into the winter season can bring about the use of several energy extras.

We have been getting acclimated to slowly losing hours of daylight since mid-June. Adding insult to injury, daylight saving time will end Sunday, November 7, meaning lights will get flipped on even earlier in the evenings. We may spend more time in the evenings watching television or on our electronic devices than we did in the warmer months.

November also kicks off the season of holiday cooking and baking. With an increase of cooking, baking, and hot water use in our kitchens, the kilowatt hours start piling up as fast as the calories. Since we enjoy filling our homes with the scents of Thanksgiving and



Christmas traditions, save energy by lighting a pumpkin pie scented candle. Just be prepared for the disappointed elfin faces when they realize the scent is a candle and not the real thing.

Additionally, the Christmas lights that will decorate our homes' interiors and exteriors will soon be making their twinkling, meter-spinning, appearance. Reduce their energy drain by only using LED lights and setting a timer.

If you like to take the chill out of a room by switching on an electric fireplace or space heater, read the small print. The way the "energy-efficient" advertising claims work are by turning down (way down) the

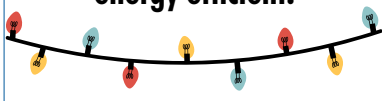
thermostat for the house and using the space heater to warm the room you are occupying. ***Any 1,500-watt appliance costs approximately 18 cents per hour to operate.***

Livestock and pets may also need winter provisions that include electricity. Heated water bowls, livestock tank heaters, and heat lamps add to your winter energy bills. Look for items that are thermostatically controlled or be diligent about unplugging these items when temperatures are above freezing.

Winter is knocking on our doors. I am all for telling him to keep the visit short!

*~Marla Foor,  
Communication Specialist*

**Use LED lights  
and set a timer to be more  
energy efficient.**



**Cooperative  
Offices Closed**

**Thursday, November 11, Veterans Day  
Thursday, November 25 and  
Friday, November 26, Thanksgiving**