



## Multiple scholarship winners announced

Shelby Electric Cooperative received many qualified scholarship applications this year. Due to COVID-19 restrictions on Cooperative Youth Programs, the cooperative decided to transfer unutilized funds from youth activities to our Scholarship Program. After selecting our three \$1,000 winners, we had two additional applications that stood out. Those two applicants will receive a \$500 scholarship. The recipients were chosen based on GPA, college entrance test scores, volunteer work, and an essay titled “My Legacy.”

### Three - \$1,000 winners

The following three youth were recognized and awarded \$1,000 during Shelby Electric Cooperative’s 83rd annual meeting of members on Friday, June 10. The recipients are current Shelby Electric Cooperative members’ sons or daughters who recently graduated from high school and are going on to further their education.

This year’s winners were Tucker Tippitt of Taylorville, Alexis Kent of Taylorville, and Lizzie Schafer of Owaneco.

Tippitt is a recent graduate of Taylorville High School and plans to attend Southern Illinois University Edwardsville to study exercise science. After obtaining his Bachelor of Science degree, he plans to further his education by pursuing a doctorate in physical therapy. He is the son of Carla and Brad Tippitt.

Kent is also a recent graduate of Taylorville High School and plans to attend the University of Illinois Urbana-Champaign to study speech and hearing science. She aspires to get her master’s degree and become a speech-language pathologist to work in a clinical setting. She is the daughter of Amy and Barry Kent.

Schafer is a recent graduate of Taylorville High School as well. She plans to attend Butler Community College in El Dorado, Kansas and major in agriculture communications. She would like to work as a broadcaster or journalist to promote the agriculture industry on a national scale. She is the daughter of Sue and Aaron Schafer.

### Two - \$500 winners

The two additional scholarships were awarded to Will McClain and

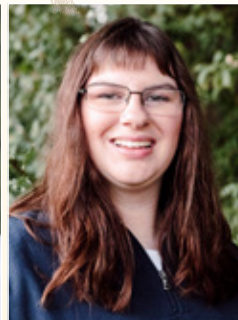
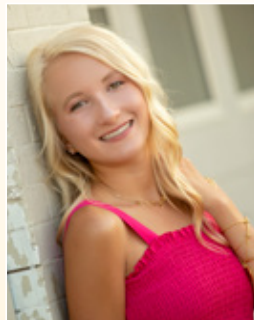
Delaney Nation.

McClain is a recent graduate of the Illinois Mathematics & Science Academy in Aurora, Illinois. He plans to attend the University of Alabama in Huntsville and major in chemical engineering. He is the son of Rebecca McClain and Tim McClain.

Nation is a recent graduate of Central A&M High School. She plans to attend Lake Land College and major in business. She is the daughter of Yolanda and John Nation.

“We are so excited to be able to offer this scholarship program to the students in our service area! It is a great way for the cooperative to give back to the community,” noted Faith Wheeler, Member Services Specialist. Information about the 2023 scholarships will be sent to area high school guidance counselors in the fall.

You can learn more about this and other scholarships on the cooperative’s website, [shelbyelectric.coop](http://shelbyelectric.coop), under the “Community” tab or call the office at 217-774-3986.



*This year’s \$1,000 scholarship recipients, pictured from left, are Tucker Tippitt of Taylorville, Alexis Kent of Taylorville, and Lizzie Schafer of Owaneco. \$500 scholarship recipients are Will McClain of Shelbyville and Delaney Nation of Tower Hill.*

# Delaney Nation receives statewide scholarship

The rural electric cooperatives of Illinois saw an opportunity to help students in rural communities by establishing the Thomas H. Moore IEC Memorial Scholarship Fund through their statewide association, the Association of Illinois Electric Cooperatives (AIEC).

The AIEC started awarding two scholarships a year in 1996 and over the years it has grown to 14 scholarships awarded in the amount of \$2,000 each in 2022. The AIEC awards these scholarships each year to deserving students in the “electric cooperative family.” These scholarships are awarded based on grade point average, college entrance test scores, work and volunteer experience, participation in school and community activities, biographical statements, and knowledge of electric cooperatives as demonstrated by a short essay.

With more than 220 applications received, Shelby Electric Cooperative is pleased to announce Delaney Nation was awarded one of the Thomas H. Moore scholarships. A recent graduate from Central A&M High School, Delaney plans to attend



*Representing the Association of Illinois Electric Cooperatives, Kevin Bernson presents Delaney Nation with the Illinois Electric Cooperatives' Thomas H. Moore scholarship at Central A&M High School.*

Lake Land College to major in business. After obtaining her business degree, Delaney aspires to work in the human resources department in the manufacturing field. Delaney is the

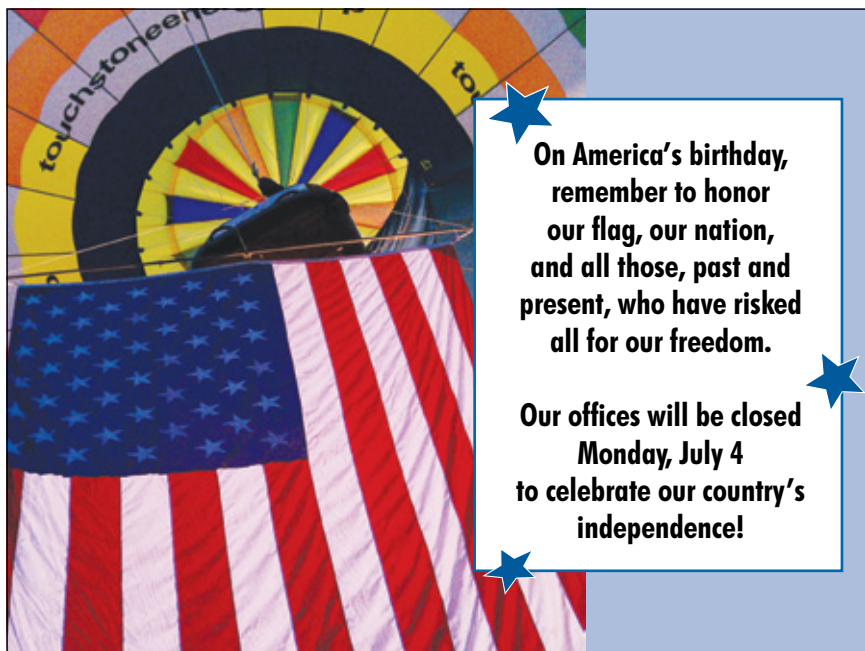
daughter of John and Yolanda Nation from Tower Hill.

The cooperative would like to congratulate and wish Delaney the best in her future endeavors.

**SHELBY** News

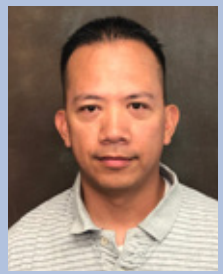
**P.O. BOX 560**  
**Shelbyville, IL 62565**  
**Phone: 217-774-3986**  
**or 1-800-677-2612**  
**Pay-by-Phone:**  
**1-855-385-9981**  
**www.shelbyelectric.coop**  
**twitter.com/YourCoop**  
**facebook.com/YourCoop**

**Office Hours:**  
**7:00 a.m. - 4:00 p.m.**



## Employee News

### Tim Bejosano new Propane Technician/Driver



Tim Bejosano

Tim Bejosano recently joined the Shelby Energy Company team and is excited for this opportunity! Tim is originally from Guam and moved to California when he was 8. At 18, Tim decided to join the military as an Army infantryman. He still serves this country in the Army Reserves as a petroleum supply specialist, fueling Black Hawk helicopters. Before joining Shelby Energy, Tim worked for Morgan Distributing in a similar position.

Tim lives in Shelbyville with his wife Laura (Smith) Bejosano, their 2-year-old son Tyson, and stepdaughter Allyson. Tim also has two sons, Preston & Rylan. In his spare time, he likes to do woodworking and dabbling in screen printing projects.

### Shelby Energy Company welcomes Abby Manship



Abby Manship

Abby Manship recently accepted the position of Bookkeeper for Shelby Energy Company. A Shelbyville native, Abby studied agriculture at Lake Land College after graduating from Shelbyville High School.

Before starting at Shelby Energy, Abby worked six years as an Administrative Assistant at The Equity in the Pana office. Abby is looking forward to new opportunities for growth and helping out Shelby Energy customers.

In her spare time, Abby enjoys spending time with friends, family (especially her 10-month-old son Tate), and helping her fiancé on the farm.

### Jeromy Miller makes his return to co-op



Jeromy Miller

After working eight years for M.J.M. Electric Cooperative based in Carlinville, Illinois, Jeromy Miller comes back home to work for Shelby Electric Cooperative (SEC) as a Fiber Staking Engineer. A Nokomis High School graduate, Jeromy completed lineman school at the Southeast Lineman Training Center in NW Georgia in fall 2000. He started at SEC in 2003 as a lineman, then moved to the engineering department in 2007. Jeromy worked

for the co-op from 2003 until he left for M.J.M. in 2014. He currently lives in Taylorville and will work from the Taylorville outpost.

When he is not working, Jeromy likes to spend time with his two daughters, hanging out with friends, being outdoors, and tinkering with electronics and old radios.

### Energy Efficiency Tip of the Month

Did you know the combined use of large appliances like dishwashers, clothes dryers and washing machines account for the largest percentage of electricity use in the average U.S. home? Take small steps to save energy when using these appliances.

Only run full loads in the dishwasher, and thoroughly scrape food from dishes before loading. Dry towels and heavier cottons separate from lighter-weight clothing, and clean the lint screen after every use. Wash clothing in cold water to save energy used to heat water.

Source: EIA and DOE



REAL LIFE  REAL POWER

# Getting Real with Marla and portable generators

A portable generator is not usually first and foremost on our minds, until we can not flip a switch to power up whatever we need. When we do not have access to electricity, we suddenly realize just how dependent on it we are! These times may include weather-related outages, construction sites, and outdoor activities such as camping, fairs, and festivals.

Thunderstorms are a common underlying culprit of power outages in our area. About half of a year's thunderstorms occur during June, July, and August. Illinois also receives more than its fair share of damage by tornadoes. In 2021, Illinois ranked fourth in the nation by the number of tornadoes (80). Weather.com reported, "The states hit most often in the biggest out-breaks are almost all east of the Mississippi River."

Be proactively prepared so you are not scrambling to buy whatever remains in the store when the need arises. Calculate the number of watts required to meet your projected needs. Are you going to be running house fans and a couple of lights, or are you planning to provide power to refrigerators, freezers, and air conditioners or space heaters? Include the surge or start-up wattage, the additional amount of electricity needed for a few seconds to start electric motors commonly found in appliances such as a furnace fan or refrigerator. Since appliances rarely all cycle on at the same time, you will only



need to factor in the appliance with the highest surge watts.

Avoid overloading the cord and generator by purchasing and using the right extension cord for the situation. Cord gauge and amperage rating matter. Many cords are labeled by "duty" - light, heavy, and extra heavy duty. For example, powering a circular saw may need an extra heavy duty cord. If you are powering DJ and sound equipment, that may require a heavy duty cord. Powering lights or small appliances only requires a light duty cord. Read the labels, and if in doubt, ask for assistance.

Following are important safety precautions to follow:

- Do not plug the generator into a wall outlet. Electricity will then backfeed through the system, creating a dangerous situation for linemen working on power restoration and anyone near a downed line.
- Never use your generator in an enclosed space.

- Keep generators at least 20 feet away from your home.
- Do not operate a generator near doors and windows to help prevent carbon monoxide from entering the building.
- Always start the generator before plugging an extension cord into it.

Although we are not able to control the weather, we can prepare for outages and other situations where we may need temporary, portable electricity. As Benjamin Franklin said, "By failing to prepare, you are preparing to fail." Take time to prepare!

~Marla Foor,  
*Communication Specialist*

*Sources: Storm Prediction Center, National Weather Service, Generac, Illinois State Climatologist, SafeElectricity.org*



## ONLINE BILL PAY

Pay your bills online and monitor usage with the **smarthub** app!

